

# DEIS Review Process – Information Note

## Background

A process to review DEIS – the Action Plan for Educational Inclusion has been ongoing since its announcement in April 2015.

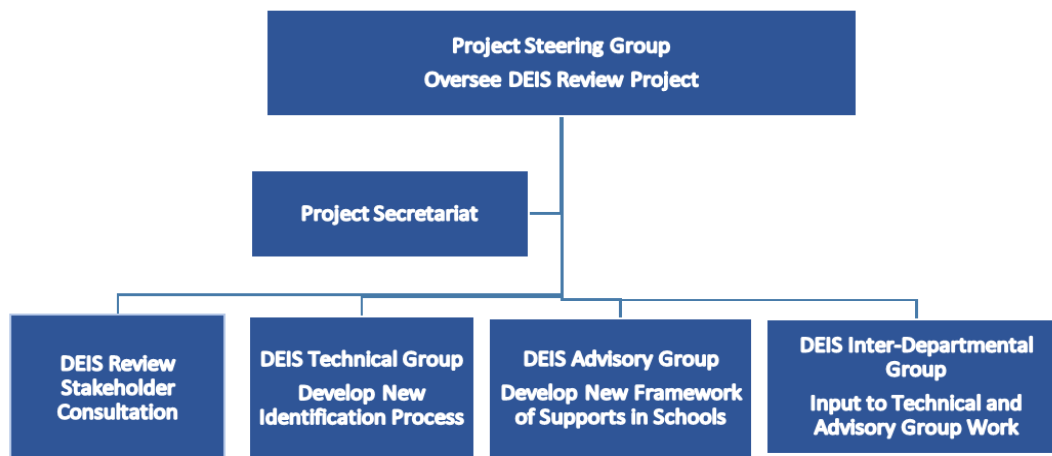
The objective of the review is to develop a new methodology for the identification of schools and a renewed framework of support for schools to address educational disadvantage in the context of learning from the DEIS programme to date and relevant policy and other changes since its introduction in 2005.

The starting point for the review process was the publication of the DES-commissioned ESRI Report – *Learning from the Evaluation of DEIS*, which draws on existing evaluations of the DEIS Programme together with international and Irish research on educational disadvantage to provide a holistic overview of the programme outcomes and to highlight the implications for future policy development. A copy of this report is available at - <http://www.esri.ie/publications/learning-from-the-evaluation-of-deis/>

The timeline for the project envisages the publication of the revised Plan by the end of 2016 and the implementation of same from the beginning of the 2017/18 school year.

## Review Structure

The Review is taking place within the following structure:



A **Project Steering Group** has been established and will remain in operation until Project Close. Given the broad range of activities and responsibilities involved in this project membership of this group includes members of the Department’s Management Board with key responsibilities in relevant areas of provision. The group has a governance and approval role to ensure delivery of the project.

A **Technical Working Group** is considering appropriate eligibility criteria to identify the level of need in schools and an appropriate methodology for the development of a new assessment framework.

The **DEIS Advisory Group** –is reviewing the current School Support Programme (SSP) and drawing together the outcomes from the various consultation processes with stakeholders, and proposals made by the Interdepartmental and Advisory Groups to inform a future framework of supports in schools.

An **InterDepartmental Group** involving the Departments of **Social Protection, Health, Children & Youth Affairs and Environment & Local Government** is examining current and potential future inputs to DEIS to develop a framework for interdepartmental and inter-agency links to ensure greater cohesion and cross-sectoral cooperation for future delivery of initiatives catering for those at risk of educational disadvantage.

**Stakeholder engagement** has included:

- Invited submissions from education partners in June 2015
- INTO/St Patrick's College Educational Disadvantage Seminar-Dec 2015
- A follow-up education partners forum on 23<sup>rd</sup> May 2016
- Engagement with organisations delivering interventions under the PEIP/ABC programme in DEIS schools
- Engagement with the C&V Pillar via the BOBF Advisory Council
- Engagement with EU colleagues through the work of the EU Schools Policy WG on Early School Leaving
- Additional engagement with education academics and practitioners in July and September 2016

**Details of the terms of Reference and membership of each of the review groups are as follows:**

### **1. DEIS Review Advisory Group**

#### **Terms of Reference**

- Review the DEIS School Support Programme in the context of available evaluations and analysis of the implementation of the DEIS Programme to date, consultations with education partners and other stakeholders.
- Liaise with the DEIS Technical Working Group and the Inter Departmental Working Group on the development of eligibility criteria for a new DEIS identification process.
- Liaise with the IDG to include proposals made by other Government Departments and Agencies in overall consideration for supports;
- Make recommendations for new framework of supports for schools resulting from consideration of all outputs from the IDG and Consultancy Forum
- Make recommendations on an accompanying Monitoring and Evaluation Framework, including, where appropriate, relationship protocols and service level agreements with other Government Departments and agencies and other service providers

**Membership: DES Business Units and the DES Inspectorate**

## **2. DEIS Review Inter-Departmental Group**

### **Terms of Reference**

1. To review reports from relevant Departments and Agencies on their current inputs to the DEIS School Support Programme in general and in the context of evaluations and analysis of such programmes to date including proposals for new or amended inputs;
2. The Group will work in tandem with other working groups involved in the review/assessment of measures to combat educational disadvantage and contribute strategic oversight in terms of the alignment of policy development, to ensure a whole-of government approach to supporting DEIS schools and the communities they serve
3. To develop a framework for inter-departmental and inter-agency links with a view to ensuring greater cohesion and cross-sectoral cooperation for future delivery of initiatives catering to those at risk of educational disadvantage.
4. To make recommendations to the DEIS Advisory Group on elements for inclusion in the new SSP programme.
5. The Group shall meet at a minimum, every 3 months, or more frequently with the agreement of the members, if required.

### **Membership**

- D/Community and Youth Affairs (DCYA)
- D/Environment, Community & Local Government (D/ECLG)
- D/Social Protection (DSP)
- D/Health (D/H)

## **3. DEIS Review Technical Working Group**

### **Terms of Reference:**

- Consider what eligibility criteria are now appropriate to re-identify the level of need in schools;
- Examine all available data sources in order to determine an appropriate methodology for the development of a new assessment framework;
  - o The assessment framework for the identification of schools for DEIS should include a review of all schools as part of the current review and options to cater for ongoing identification of newly established schools, including schools established from the amalgamation of two or more schools.
- Develop a new identification process to produce a ranking of all schools, primary and post primary based on their assessed level of disadvantage for the purpose of allocation of resources;
- Develop a methodology for future use of DEIS identification process to assess new schools including schools established by the amalgamation of existing schools

In the event that a survey of schools is required, due to the absence of relevant/authenticated data sources, this group will also:

- advise on the questionnaire to issue to principals to assess the schools level of educational disadvantage;
- advise how the data returned should be employed to generate a rank order of schools based on levels of disadvantage advise on quality proofing the rank order of schools.

### **Membership**

- DES Social Inclusion Unit
- DES Inspectorate;
- DES Statistics Section;
- DES Planning and Building Unit - Forward Planning Section;
- DES Special Education Section
- Educational Research Centre;

**Any queries in relation to the DEIS Review Process should be addressed to:**  
[social\\_inclusion@education.gov.ie](mailto:social_inclusion@education.gov.ie)

**Social Inclusion Unit**  
**September 2016**