



---

**An Roinn Oideachais  
agus Scileanna**  
Department of  
Education and Skills

## **Patronage Assessment Report**

**School:** Maynooth

**Level:** Primary

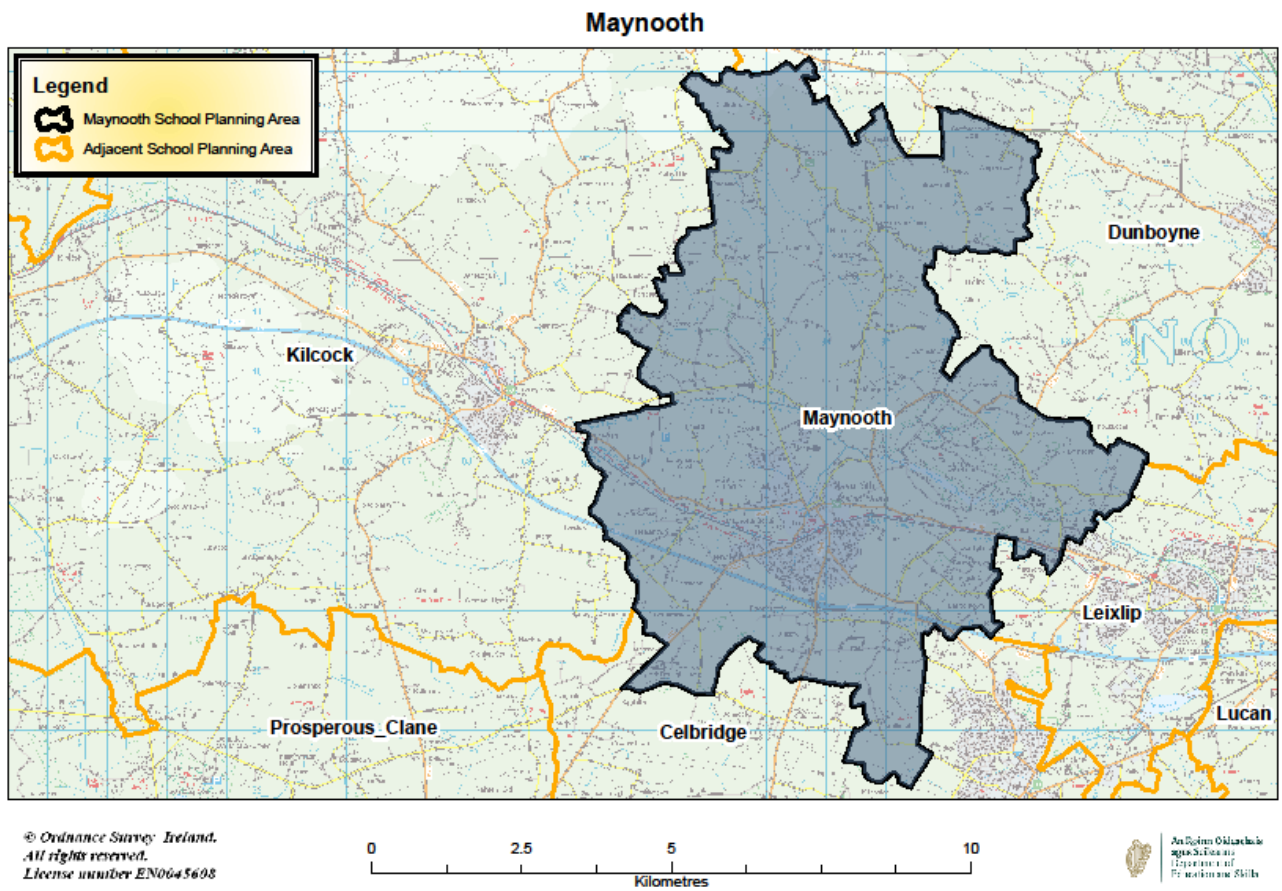
**Year:** 2019

**Size:** 8 classrooms

**Report to the New Schools Establishment Group  
Department of Education & Skills  
February 2019**

<b>Table of Contents</b>	<b>Page</b>
<b>1. School Planning Area Map</b>	<b>2</b>
<b>2. Applications Received</b>	<b>3</b>
<b>3. Demographic Details</b>	<b>4</b>
<b>4. Assessment of Applications</b>	<b>5</b>
➤ 4.1 Multiple Provider Areas	<b>5</b>
➤ 4.2 Parental Preferences	<b>6</b>
○ 4.2.1 Patronage Preferences	<b>6</b>
○ 4.2.2 Language Preferences	<b>6</b>
<b>5. Conclusions</b>	<b>8</b>

# 1. School Planning Area Map



## 2. Applications Received

Five applications were received from applicant patrons in respect of this school. A brief profile of the applicants together with a synopsis of the school type proposed is set out in the following table.

Applicant Patrons	Profile of Applicant	School type proposed		Number of primary schools currently under this patronage
An Foras Pátrúnachta	An Foras Pátrúnachta is a private charitable company limited by guarantee and the patron of a number of Irish-medium primary and post-primary schools throughout the country.	Ethos:	Multi-denominational	66
		Language of Instruction proposed:	Irish	
		Also willing to offer (if sufficient demand):	n/a	
Educate Together	Educate Together is a private charitable company limited by guarantee and the patron or representative organisation of 84 primary schools and nine post-primary schools throughout the country.	Ethos:	Multi-denominational	73
		Language of Instruction proposed:	English	
		Also willing to offer (if sufficient demand):	Irish	
Kildare and Wicklow Education and Training Board (KWETB)	Kildare and Wicklow Education and Training Board (KWETB) is a statutory authority which has responsibility for managing and operating a range of education services including second-level schools and is patron of a number of primary and post-primary schools.	Ethos:	Multi-denominational	3
		Language of Instruction proposed:	English	
		Also willing to offer (if sufficient demand):	Irish	
Scoil Sinéad Ltd	Scoil Sinéad Ltd is a private charitable company limited by guarantee and is a new patron body for one primary school and a trustee partner in the management of one post-primary school.	Ethos:	Multi-denominational	1
		Language of Instruction proposed:	English	
		Also willing to offer (if sufficient demand):	Irish	
The Bishop of Meath and Kildare (Col)	The Church of Ireland is a church in the Reformed or Protestant tradition. The Bishop of Meath and Kildare is patron of a number of primary schools in the counties of Meath & Kildare.	Ethos:	Denominational	16
		Language of Instruction proposed:	English	
		Also willing to offer (if sufficient demand):	n/a	

### 3. Demographic details

There are currently 5 primary schools in the Maynooth school planning area. Demographic analysis shows that the average actual intake pattern<sup>1</sup> at primary level is currently 108%. The total provisional enrolment in primary schools in the area for the 2018/19 school year was 2,132 pupils.

The demographic exercises for this school planning area identified the following net requirement taking into account demographic demand, additional places required as a result of significant additional residential development (including any development arising from the Local Infrastructure Housing Activation Fund- LIHAF) and the current and planned capacity increases in existing primary schools in the area:



Based on the above analysis, there is a net requirement for 8 classrooms which cannot be accommodated in existing schools or through temporary accommodation / expansion of existing schools. It is decided to establish 1 x 8 classroom school in 2019.

<sup>1</sup> **Average Actual Intake Pattern:** if all children resident in the relevant school planning area attended primary school in that school planning area, the intake pattern would be 100%. If the intake pattern is less than 100%, it would suggest that some children are travelling to schools outside the school planning area. If the intake pattern is greater than 100%, it would suggest that a number of children are travelling into schools in the school planning area from other school planning areas. The average intake pattern over a number of years allows the Department to project the likely demand over the coming years assuming a continuation of the same pattern.

## 4. Assessment of applications

All patrons have agreed to the Patronage Commitments as set out in the Section D of the Patronage Application Form attached to main report.

The invitation letter to patrons, also attached to the main report, sets out in detail the:

- Arrangements for the Establishment and Patronage of New Primary Schools due to open in September 2019.
- General Information for Prospective Patrons; and
- Patron Code of Conduct

### ➤ 4.1 Multiple Provider Areas

There are currently five primary schools in the Maynooth school planning area:

Roll No	School Name	Patron	Ethos	Language of Instruction	Gender	DEIS	2017/2018 Enrolment*
00779U	Presentation Girls Primary School	Archbishop of Dublin	Catholic	English	Girls	N	597
17341U	Maynooth BNS	Archbishop of Dublin	Catholic	English	Boys	N	561
17652O	Scoil Oilibheir Naofa	Bishop of Meath	Catholic	English	Mixed	N	218
20058T	Scoil Ui Fhiaich	Archbishop of Dublin	Catholic	Irish	Mixed	N	473
20292E	Maynooth Educate Together**	Educate Together	Multi denominational	English	Mixed	N	224

\*Latest confirmed enrolments, 2018/19 are provisional.

\*\* 2018 Approved increase to 2<sup>nd</sup> stream

Of the five primary schools in the school planning area, four are Catholic and one is multi-denominational.

Four of the five proposed models would increase diversity in the area by providing multi-denominational provision in the area.

## ➤ 4.2 Parental Preferences

### ○ 4.2.1 Patronage Preference

The table below sets out the first preferences received by each applicant patron:

<b>Applicant Patron</b>	<b>Valid First Preferences</b>
An Foras Pátrúnachta	<b>54</b>
Educate Together	53
Kildare and Wicklow Education and Training Board	51
Scoil Sinéad	11
The Bishop of Meath & Kildare (Col)	8
<b>Total Valid First Preferences</b>	<b>177</b>

### ○ 4.2.2 Language Preferences

#### **Breakdown of first preferences by preferred language of instruction**

<b>Language of Instruction Preferences</b>	<b>An Foras Pátrúnachta</b>	<b>Educate Together</b>	<b>KWETB</b>	<b>Scoil Sinéad</b>	<b>The Bishop of Meath &amp; Kildare (Col)</b>	<b>Total Preferences</b>
English-medium	1	48	35	7	8	<b>99</b>
Irish-medium	50	1	4	2	0	<b>57</b>
No Preference	3	4	12	2	0	<b>21</b>
<b>Total first Preferences</b>	<b>54</b>	<b>53</b>	<b>51</b>	<b>11</b>	<b>8</b>	<b>177</b>

The level of parental preferences for Irish-medium instruction is significant (57 or 32.2% of first preferences) compared with 99 (or 55.9%) of preferences for English-medium instruction while 21 (or 11.9%) of parents did not specify a preference for language of instruction.

An Foras Pátrúnachta is the only applicant patron to propose an Irish-medium school while some other applicant patrons proposed English-medium but indicated their willingness to offer an Irish-medium school if demand exists for same.

#### **Gaelscoileanna within the school planning area**

<b>Roll No</b>	<b>School Name</b>	<b>Total Enrolment 2017/18</b>	<b>Ethos</b>
20058T	Scoil Ui Fhiaich	473	Catholic

### Gaelscoileanna within 10km radius of the centre point of the school planning area

Roll No	School Name	Total Enrolment 2017/18	Ethos	School Planning Area
20082Q	Gaelscoil Thulach Na Nóg	292	Inter Denominational	Dunboyne
19897I	Scoil Uí Riada*	532	Catholic	Kilcock
19680G	Scoil C.Uí Dhalaigh	429	Catholic	Leixlip

\*2017 School approved to increase to 3<sup>rd</sup> stream

### Language preferences and current provision in the school planning area

	No. of Irish Language Preferences	% of Language Preferences	Current Irish Medium Provision	
An Foras Pátrúnachta	50	87.7%		
Educate Together	1	1.8%	Number of primary schools in SPA	5
Kildare and Wicklow ETB	4	7.0%	Total Enrolment	2,089
Scoil Sinéad	2	3.5%	Of which are Gaelscoileanna	1
The Bishop of Meath & Kildare (Col)	0	0.0%	Enrolments in Gaelscoileanna	473
	<b>57</b>	<b>32.2%</b>	<b>% Current Irish Provision in SPA</b>	<b>22.6%</b>



## 5. Conclusions

- All patrons have confirmed that they will satisfy the requirements as set out by the Department for the patronage of new schools.
- Four of the five proposed models would increase diversity in the area by providing multi-denominational provision in the area.
- An Foras Pátrúnachta received the highest number of valid first preference votes i.e. 54 or 30.5%.
- The level of parental preferences for Irish-medium instruction is significant with 57 of 177 valid first preferences (32.2%) compared with 99 of 177 valid first preferences (55.9%) for English-medium instruction.
- The results of the parental preferences and broader analysis, including
  - the extent of diversity and Irish-medium provision currently available and planned in this and the adjoining school planning areas, including the planned expansion of Maynooth Educate Together National School to a 16-classroom school – currently 9 classrooms; and
  - that a new Gaelcholáiste will be established in Maynooth from September 2019,

indicates that the patronage of the new primary school for the Maynooth school planning area should be awarded to An Foras Pátrúnachta to provide a multi-denominational primary school with Irish as the language of instruction.

**Forward Planning Section**  
**Department of Education and Skills**  
**February 2019**