



**An Roinn Oideachais
agus Scileanna**
Department of
Education and Skills

Patronage Assessment Report

School: Kilcoole/Newtownmountkennedy

Level: Primary

Year: 2019

Size: 8 classrooms

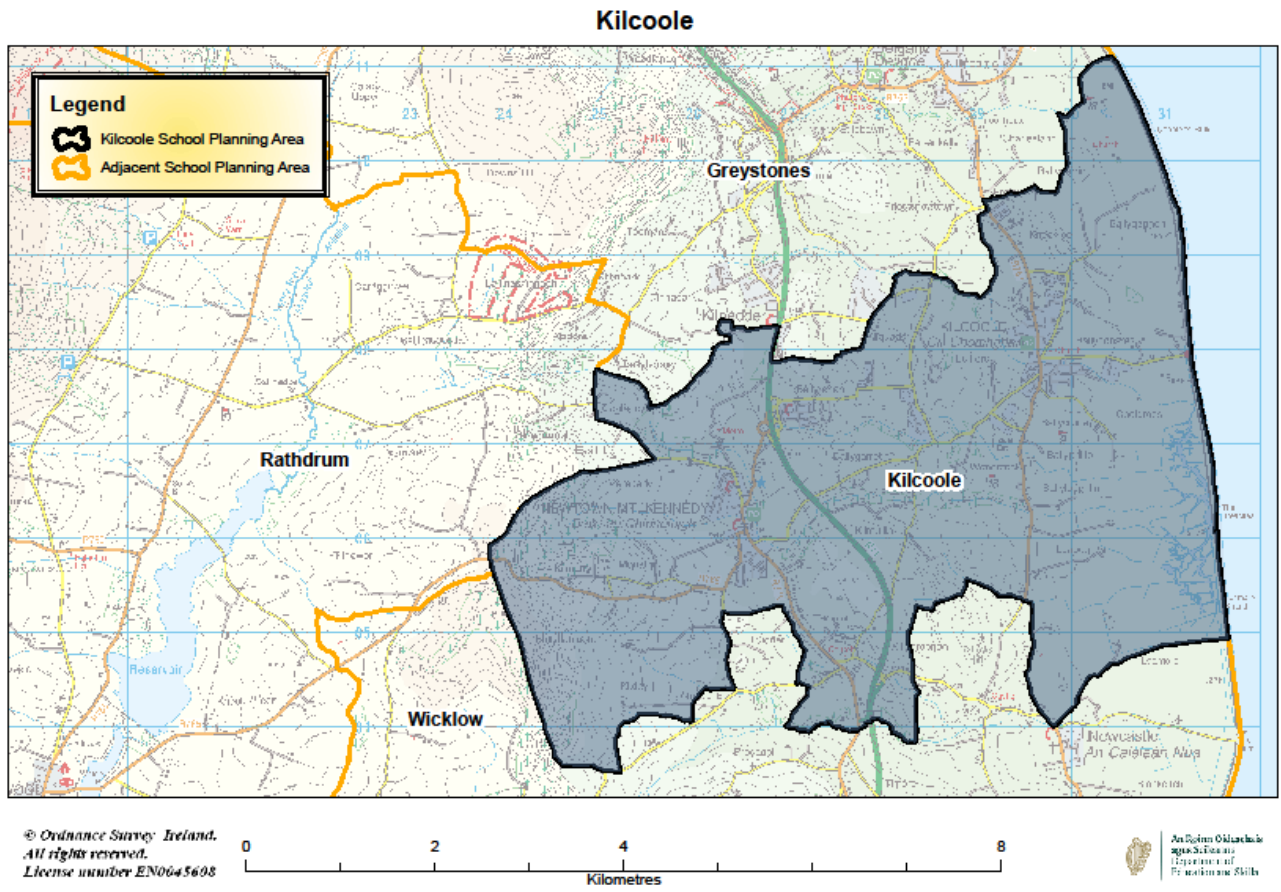
**Report to the New Schools Establishment Group
Department of Education & Skills
February 2019**

Table of Contents

Page

1. School Planning Area Map	2
2. Applications Received	3
3. Demographic Details	4
4. Assessment of Applications	5
➤ 4.1 Multiple Provider Areas	5
➤ 4.2 Parental Preferences	6
○ 4.2.1 Patronage Preferences	6
○ 4.2.2 Language Preferences	6
5. Conclusions	7

1. School Planning Area Map



2. Applications Received

Four applications were received from applicant patrons in respect of this school. A brief profile of the applicants together with a synopsis of the school type proposed is set out in the following table.

Applicant Patrons	Profile of Applicant	School type proposed		Number of primary schools currently under this patronage
An Foras Pátrúnachta	An Foras Pátrúnachta is a private charitable company limited by guarantee and the patron of a number of Irish-medium primary and post-primary schools throughout the country.	Ethos:	Multi-denominational	66
		Language of Instruction proposed:	Irish	
		Also willing to offer (if sufficient demand):	n/a	
Educate Together	Educate Together is a private charitable company limited by guarantee and the patron or representative organisation of 84 primary schools and nine post-primary schools throughout the country.	Ethos:	Multi-denominational	73
		Language of Instruction proposed:	English	
		Also willing to offer (if sufficient demand):	Irish	
Kildare and Wicklow Education and Training Board (KWETB)	Kildare and Wicklow Education and Training Board (KWETB) is a statutory authority which has responsibility for managing and operating a range of education services including second-level schools and is patron of a number of primary and post-primary schools.	Ethos:	Multi-denominational	3
		Language of Instruction proposed:	English	
		Also willing to offer (if sufficient demand):	Irish	
Scoil Sinéad Ltd	Scoil Sinéad Ltd is a private charitable company limited by guarantee and is a new patron body for one primary school and a trustee partner in the management of one post-primary school.	Ethos:	Multi-denominational	1
		Language of Instruction proposed:	English	
		Also willing to offer (if sufficient demand):	Irish	

3. Demographic details

There are currently 2 primary schools in the Kilcoole/Newtownmountkennedy school planning area. Demographic analysis shows that the average actual intake pattern¹ at primary level is currently 81%. The total provisional enrolment in primary schools in the area for the 2018/19 school year was 954 pupils.

The demographic exercises for this school planning area identified the following net requirement taking into account demographic demand, additional places required as a result of significant additional residential development (including any development arising from the Local Infrastructure Housing Activation Fund- LIHAF) and the current and planned capacity increases in existing primary schools in the area:



Based on the above analysis, there is currently a net requirement of 5 classrooms in this school planning area. It is therefore recommended to open a 1 x 8 classroom school in the Newtownmountkennedy area in 2019.

¹ **Average Actual Intake Pattern:** if all children resident in the relevant school planning area attended primary school in that school planning area, the intake pattern would be 100%. If the intake pattern is less than 100%, it would suggest that some children are travelling to schools outside the school planning area. If the intake pattern is greater than 100%, it would suggest that a number of children are travelling into schools in the school planning area from other school planning areas. The average intake pattern over a number of years allows the Department to project the likely demand over the coming years assuming a continuation of the same pattern.

4. Assessment of applications

All patrons have agreed to the Patronage Commitments as set out in the Section D of the Patronage Application Form attached to main report.

The invitation letter to patrons, also attached to the main report, sets out in detail the:

- Arrangements for the Establishment and Patronage of New Primary Schools due to open in September 2019.
- General Information for Prospective Patrons; and
- Patron Code of Conduct

➤ 4.1 Multiple Provider Areas

There are currently 2 primary schools in the Kilcoole Newtownmountkennedy school planning area:

Roll No	School Name	Patron	Ethos	Language of Instruction	Gender	DEIS	2017/2018 Enrolments*
20278K	Newtownmountkennedy Primary School	Archbishop of Dublin	Catholic	English	Mixed	Y	325
20346B	Kilcoole Primary School	Archbishop of Dublin	Catholic	English	Mixed	N	583

*Latest confirmed enrolments, 2018/19 are provisional.

Of the 2 primary schools in the school planning area both are Catholic.

All proposed models would increase diversity in the area by providing multi-denominational provision in the area.

➤ 4.2 Parental Preferences

○ 4.2.1 Patronage Preference

The table below sets out the first preferences received by each applicant patron:

Applicant Patron	Valid First Preferences
An Foras Pátrúnachta	27
Educate Together	44
Kildare & Wicklow Education & Training Board (KWETB)	24
Scoil Sinéad Patron	4
Total Valid First Preferences	99

○ 4.2.2 Language Preferences

Breakdown of first preferences by preferred language of instruction

Language of Instruction Preferences	An Foras Pátrúnachta	Educate Together	KWETB	Scoil Sinéad Ltd	Total Preferences
English-medium	1	39	24	3	67
Irish-medium	19	1	0	0	20
No Preference	7	4	0	1	12
Total First Preferences	27	44	24	4	99

The level of parental preferences for Irish-medium instruction is moderate (20 or 20.2% of first preferences) compared with 67 (or 67.7%) of preferences for English-medium instruction while 12 (or 12.1%) of parents did not specify a preference for language of instruction.

An Foras Pátrúnachta is the only applicant patron to propose an Irish-medium school while all other applicant patrons proposed English-medium but indicated their willingness to offer an Irish-medium school if demand exists for same.

Gaelscoileanna within the school planning area

There are currently no gaelscoileanna in the Kilcoole school planning area.

Gaelscoileanna within 10km of the school planning areas

Roll No	School Name	Total Enrolment 2017/18	Ethos	School Planning Area
20301C	Gaelscoil na gCloch Liath	427	Inter denominational	Greystones

Language preferences and current provision in the school planning area

Applicant Patron	No. of Irish Language Preferences	% of Language Preferences	Current Irish Medium Provision	
Educate Together	1	5.0%	Number of primary schools in SPA	2
An Foras Pátrúnachta	19	95.0%	Total Enrolment	932
Kildare & Wicklow ETB	0	0.0%	Of which are Gaelscoileanna	0
Scoil Sinéad	0	0.0%	Enrolments in Gaelscoileanna	0
Totals	20	20.2%	% Current Irish Provision in SPA	0.00%

Irish-medium provision will be kept under active review by the Department in line with the process set out in the Department's overall report to the NSEG, including, where appropriate, proactively exploring the level of demand for Irish-medium provision, and the scope for this to be dealt with through the expansion of existing provision in the area/surrounding areas and/or requirements for new schools into the future.

5. Conclusions

- All patrons have confirmed that they will satisfy the requirements as set out by the Department for the patronage of new schools.
- All proposed models would increase diversity in the area by providing multi-denominational provision in the area.
- Educate Together received the highest number of valid first preference votes i.e. 44 or 44.4%.
- The level of parental preferences for Irish-medium instruction was 20 of 99 valid first preferences (20.2%) compared with 67 of 99 valid first preferences (67.7%) for English-medium instruction.
- Based on the results of the parental preferences and broader analysis, including the extent of diversity currently available in this and the adjoining school planning areas, the analysis indicates that the patronage of the new primary school for the Kilcoole school planning area should be awarded to Educate Together to provide a multi-denominational primary school with English as the language of instruction.

**Forward Planning Section
Department of Education and Skills
February 2019**