



---

**An Roinn Oideachais  
agus Scileanna**  
Department of  
Education and Skills

## **Patronage Assessment Report**

**School:** Glasheen\_CorkCity/Pouladuff

**Level:** Primary

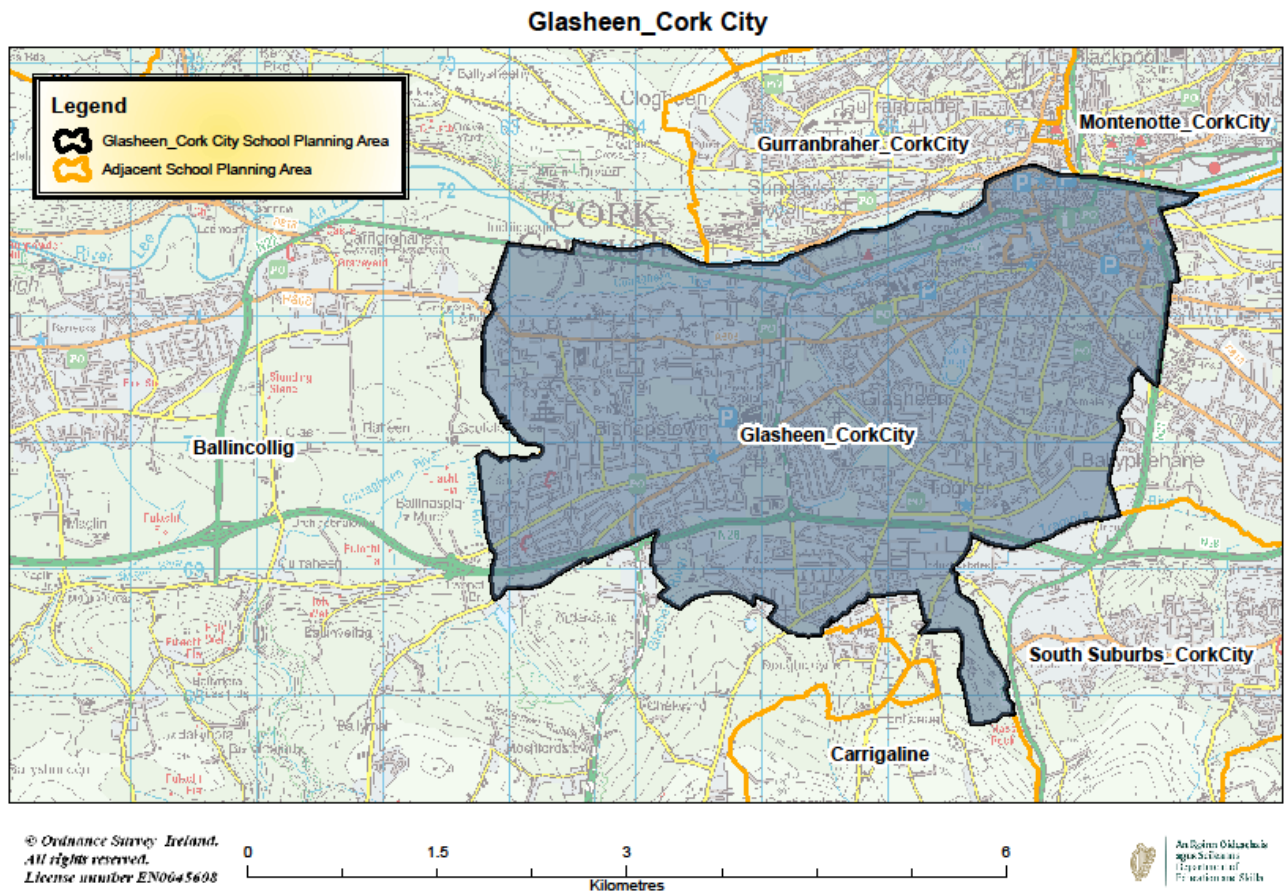
**Year:** 2019

**Size:** 8 classrooms

**Report to the New Schools Establishment Group  
Department of Education & Skills  
February 2019**

<b>Table of Contents</b>	<b>Page</b>
<b>1. School Planning Area Map</b>	<b>2</b>
<b>2. Applications Received</b>	<b>3</b>
<b>3. Demographic Details</b>	<b>4</b>
<b>4. Assessment of Applications</b>	<b>5</b>
➤ 4.1 Multiple Provider Areas	<b>5</b>
➤ 4.2 Parental Preferences	<b>7</b>
○ 4.2.1 Patronage Preferences	<b>7</b>
○ 4.2.2 Language Preferences	<b>7</b>
<b>5. Conclusions</b>	<b>8</b>

# 1. School Planning Area Map



## 2. Applications Received

Four applications were received from applicant patrons in respect of this school. A brief profile of the applicants together with a synopsis of the school type proposed is set out in the following table.

Applicant Patrons	Profile of Applicant	School type proposed		Number of primary schools currently under this patronage
An Foras Pátrúnachta	An Foras Pátrúnachta is a private charitable company limited by guarantee and the patron of a number of Irish-medium primary and post-primary schools throughout the country.	Ethos:	Multi-denominational	66
		Language of Instruction proposed:	Irish	
		Also willing to offer (if sufficient demand):	n/a	
Cork Education and Training Board (CETB)	Cork Education and Training Board (CETB) is a statutory authority which has responsibility for managing and operating a range of education services including second-level schools and is patron of a number of primary and post-primary schools.	Ethos:	Multi-denominational	2
		Language of Instruction proposed:	English	
		Also willing to offer (if sufficient demand):	Irish	
Educate Together	Educate Together is a private charitable company limited by guarantee and the patron or representative organisation of 84 primary schools and nine post-primary schools throughout the country.	Ethos:	Multi-denominational	73
		Language of Instruction proposed:	English	
		Also willing to offer (if sufficient demand):	Irish	
Scoil Sinéad Ltd	Scoil Sinéad Ltd is a private charitable company limited by guarantee and is a new patron body for one primary school and a trustee partner in the management of one post-primary school.	Ethos:	Multi-denominational	1
		Language of Instruction proposed:	English	
		Also willing to offer (if sufficient demand):	Irish	

### 3. Demographic details

There are currently 17 primary schools in the Glasheen\_CorkCity/Pouladuff school planning area. Demographic analysis shows that the average actual intake pattern<sup>1</sup> at primary level is currently 130%. The total provisional enrolment in primary schools in the area for the 2018/19 school year was 4,715 pupils.

The demographic exercises for this school planning area identified the following net requirement taking into account demographic demand, additional places required as a result of significant additional residential development (including any development arising from the Local Infrastructure Housing Activation Fund- LIHAF) and the current and planned capacity increases in existing primary schools in the area:



Based on the above analysis, there is a net requirement for 15 classrooms which cannot be accommodated in existing schools or through temporary accommodation / expansion of existing schools. It was decided to open a 1 x 8 classroom school (expandable to 16 classrooms) in 2019.

<sup>1</sup> **Average Actual Intake Pattern:** if all children resident in the relevant school planning area attended primary school in that school planning area, the intake pattern would be 100%. If the intake pattern is less than 100%, it would suggest that some children are travelling to schools outside the school planning area. If the intake pattern is greater than 100%, it would suggest that a number of children are travelling into schools in the school planning area from other school planning areas. The average intake pattern over a number of years allows the Department to project the likely demand over the coming years assuming a continuation of the same pattern.

## 4. Assessment of applications

All patrons have agreed to the Patronage Commitments as set out in the Section D of the Patronage Application Form attached to main report.

The invitation letter to patrons, also attached to the main report, sets out in detail the:

- Arrangements for the Establishment and Patronage of New Primary Schools due to open in September 2019.
- General Information for Prospective Patrons; and
- Patron Code of Conduct

### ➤ 4.1 Multiple Provider Areas

There are currently 17 primary schools in the Glasheen\_CorkCity school planning area:

Roll No	School Name	Patron	Ethos	Language of Instruction	Gender	DEIS	2017/18 Enrolments*
12473M	Greenmount Monastery NS	Bishop of Cork & Ross	Catholic	English	Mixed	Y	234
13980L	Togher Boys NS	Bishop of Cork & Ross	Catholic	English	Boys	N	261
14000C	Scoil Naomh Mhuire	Bishop of Cork & Ross	Catholic	English	Mixed	Y	290
16339F	SN Iosef Naofa	Bishop of Cork & Ross	Catholic	English	Boys	N	213
17150I	Muire Gan Smal C	Bishop of Cork & Ross	Catholic	English	Girls	Y	266
17993R	Scoil Mhuire Gan Smal B	Bishop of Cork & Ross	Catholic	English	Boys	Y	388
18253F	Scoil Naomh Caitriona	Bishop of Cork & Ross	Catholic	English	Girls	N	446
18292P	Gaelscoil an Teaghlaigh Naofa	Bishop of Cork & Ross	Catholic	Irish	Mixed	Y	220

18356P	SN Barra Naofa	Bishop of Cork, Cloyne & Ross COI	Church of Ireland	English	Mixed	N	88
18566D	SN Athair Maitiu C	Bishop of Cork & Ross	Catholic	English	Girls	N	271
18734V	Realt na Maidine	Bishop of Cork & Ross	Catholic	English	Boys	Y	101
19000E	SN an Spioraid Naomh C	Bishop of Cork & Ross	Catholic	English	Girls	N	282
19852J	Gaelscoil Uí Riada	Bishop of Cork & Ross	Catholic	Irish	Mixed	N	271
19906G	Cork Educate Together NS	Cork School Project	Multi-denominational	English	Mixed	N	214
20077A	Scoil an Spioraid Naomh (Boys)	Bishop of Cork & Ross	Catholic	English	Boys	N	417
20388R	Bunscoil an Chríost Rí	Bishop of Cork & Ross	Catholic	Part Irish	Mixed	N	487
20389T	Scoil Maria Assumpta	Bishop of Cork & Ross	Catholic	English	Girls	Y	176

\*Latest confirmed enrolments, 2018/19 are provisional.

Of the 17 primary schools in the school planning area, 15 are Catholic, 1 is Church of Ireland and 1 is multi-denominational.

All proposed models would increase diversity in the area by providing multi-denominational provision in the area.

## ➤ 4.2 Parental Preferences

### ○ 4.2.1 Patronage Preference

The table below sets out the first preferences received by each applicant patron:

Applicant Patron	Valid First Preferences
An Foras Pátrúnachta	17
Cork Education and Training Board (CETB)	12
Educate Together	<b>58</b>
Scoil Sinéad	3
<b>Total Valid First Preferences</b>	<b>90</b>

### ○ 4.2.2 Language Preferences

#### Breakdown of first preferences by preferred language of instruction

Language of Instruction Preferences	An Foras Pátrúnachta	Cork Education and Training Board (CETB)	Educate Together	Scoil Sinéad	Total Preferences
English-medium	3	9	43	2	<b>57</b>
Irish-medium	13	1	5	1	<b>20</b>
No Preference	1	2	10	0	<b>13</b>
<b>Total first preferences</b>	<b>17</b>	<b>12</b>	<b>58</b>	<b>3</b>	<b>90</b>

The level of parental preferences for Irish-medium instruction is moderate (20 or 22.2% of first preferences) compared with 57 (63.3%) of preferences for English-medium instruction while 13 (or 14.44%) of parents did not specify a preference for language of instruction.

An Foras Pátrúnachta is the only applicant patron to propose an Irish-medium school while some other applicant patrons proposed English-medium but indicated their willingness to offer an Irish-medium school if demand exists for same.

#### Gaelscoileanna within the school planning area

Roll No	School Name	Total Enrolment 2017/18	Ethos
18292P	Gaelscoil an Teaghlaigh Naofa	220	Catholic
19852J	Gaelscoil Uí Riada	271	Catholic



### Gaelscoileanna within 5km radius of the school planning areas

Roll No	School Name	Total Enrolment 2017/18	Ethos	School Planning Area
19882S	Scoil an Athair Tadhg O Murchu	235	Catholic	Ballintemple_CorkCity
19909M	Gaelscoil Peig Sayers	235	Catholic	Gurranbroher/Cork City

Note - there is one additional gaelscoil within 6km of the centre point of the school planning area.

### Language Preference and Current Provision in the school planning area

Applicant Patron	No. of Irish Language Preferences	% of Irish Language Preferences	Current Irish Medium Provision	
Educate Together	5	25.0%	Number of primary schools in SPA	17
An Foras Pátrúnachta	13	65.0%	Total Enrolment	4,655
Cork ETB	1	5.0%	Of which are Gaelscoileanna	2
Scoil Sinéad	1	5.0%	Enrolments in Gaelscoileanna	491
<b>Totals</b>	<b>20</b>	<b>22.2%</b>	<b>% Current Irish Provision in SPA</b>	<b>10.5%</b>

Irish-medium provision will be kept under active review by the Department in line with the process set out in the Department's overall report to the NSEG, including, where appropriate, proactively exploring the level of demand for Irish-medium provision, and the scope for this to be dealt with through the expansion of existing provision in the area/surrounding areas and/or requirements for new schools into the future.

## **5. Conclusions**

- All patrons have confirmed that they will satisfy the requirements as set out by the Department for the patronage of new schools.
- All proposed models would increase diversity in the area by providing multi-denominational provision in the area.
- Educate Together received the highest number of valid first preference votes i.e. 58 or 64.4%.
- The level of parental preferences for Irish-medium instruction was 20 of 90 valid first preferences (22.2%) compared with 57 of 90 valid first preferences (63.3%) for English-medium instruction
- Based on the results of the parental preferences and broader analysis, including the extent of diversity currently available in this and the adjoining school planning areas, the analysis indicates that the patronage of the new primary school for the Glasheen\_Cork City/Pouladuff school planning area should be awarded to Educate Together to provide a multi-denominational primary school with English as the language of instruction.

**Forward Planning Section  
Department of Education and Skills  
February 2019**